



Parshwastreyas
welcome home.

take a walk...

*Specially designed Kids Play area for your child to get an easy break from studies !
Senior citizens corner for the morning break or the evening stroll !*

Located just 2 mins away from the lush green National park. Will make your morning walks easy and healthy.

enjoy the view...

Vastu compliant East west oriented apartments. Open sky, chirping birds, splendid evening sun.

*Unique design with all variants - 2 bhk , 3 bhk and penthouse configurations.
The right choice will always be there.*

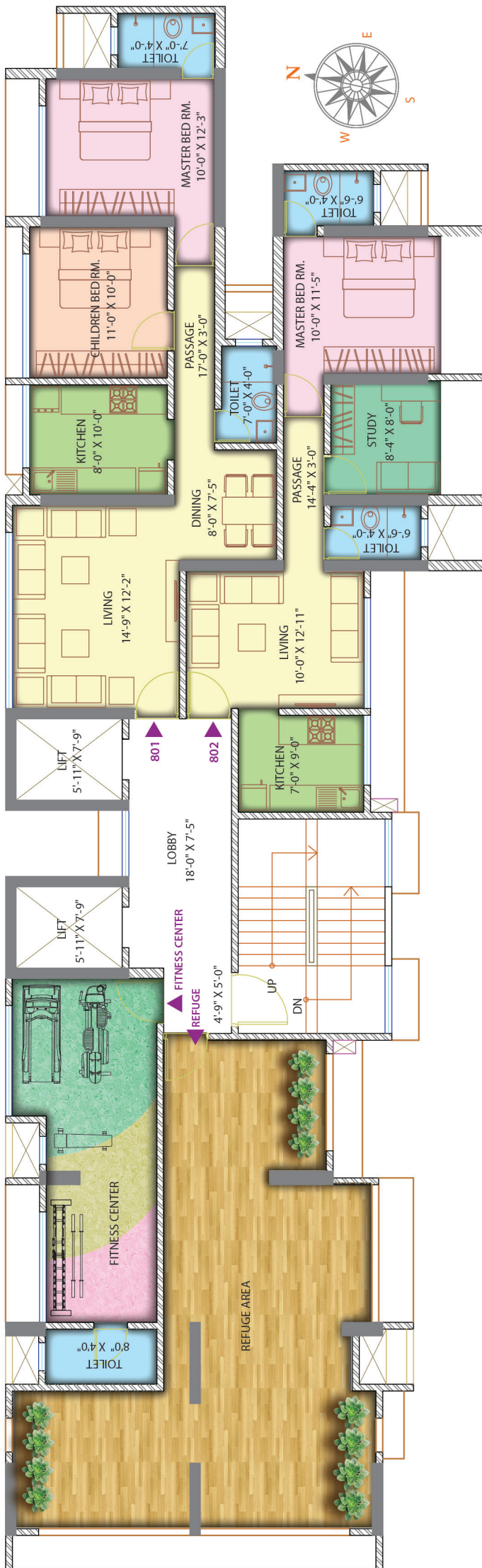
stay in touch.

Conveniently located 5 mins walking distance from Borivali east railway station & just 2 mins from Western express highway.

*Parshvashreyas*
welcome home.



A ONE SHOP FASHION HUB



CARTER ROAD NO. 9

8th FLOOR PLAN (REFUGE FLOOR)



Parshvashreyas
welcome home.



A ONE SHOP FASHION HUB

Amenities

Stilt + 15 Storey Apartment building with modern amenities.

Located 5 minutes walking distance from Borivali east railway station & 2 minutes from Jain Temple.

2 mins away from Western Express Highway.

2 mins away from Lush green National Park.

Unique design with all variants - 2 bhk, 3 bhk apartments and penthouse.

East west oriented apartments All as per Vastu principles.

Ample parking and open space.

Specially designed Kids Play area and Senior citizen's corner.

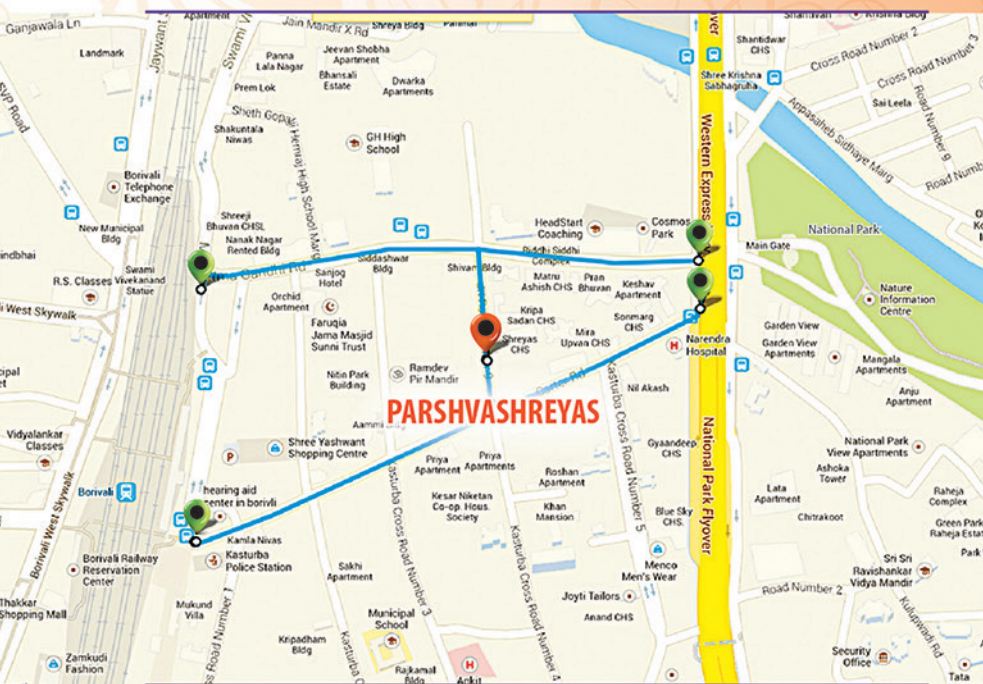
Entrance lobby designed with Italian marble and modern facilities.

Electrical switches & fixtures - MDS Legrand / Roma / Great White make.

High speed elevators of reputed brand - Otis / Schindler / Kone.

Branded plumbing fixtures Grohe / Jaguar make.

Location Map





Ample Parking 1

Senior Citizens Area 2

Children's Play Area 3

Ground Floor Recreation Plan



Parshwashreyas
welcome home.



OP FASHION HUB



Site :
Carter Road no. 9, Borivali (East), Mumbai



Architects + Planners
Design Architect

D. P. Associates
Architect



Structural Consultant
Patel & Kulkarni Associates

Legal Advisor
Mandar Koparkar

CONSORTIUM OF



Parsh Housing Pvt. Ltd.
3/4, Ravikiran building, Jaywant Sawant Road,
Near Reliance Centre, Dahisar (West), Mumbai- 400068
Tel No: 022-28907373 / 022-28907474
email : parshgroup@gmail.com